

2020
ESCAPE

S | SE | SE SPORT





ALL-NEW
HYBRID
MODEL WITH
1,500 LBS.
TOWING
CAPACITY²

3
TRIM LEVELS
TO CHOOSE
FROM:
S, SE and
SE SPORT

NEW
8-SPEED
AUTOMATIC
TRANSMISSION¹

FWD
OR INTELLIGENT
AWD¹

5
SELECTABLE
DRIVE MODES

BUILT FOR MEMORABLE MOMENTS.

Spontaneity. It's what makes life more... extraordinary. Adventure beckons at a moment's notice. To help you respond, we reimagined what it means to ESCAPE. Then we built it. The all-new 2020 Ford Escape. Giving it a fresh new look. A spacious, adaptable interior. Advanced connectivity. And proven capability with Intelligent AWD¹ to handle whatever obstacles the city – or the weather – puts in your path. So what are you waiting for?

SE Sport. Rapid Red Metallic Tinted Clearcoat. Available equipment. ¹Available feature. ²When properly equipped.





STAY WELL-ADJUSTED.

The 10-way power driver's seat¹ and tilt/telescoping steering column help provide a comfortable driving experience. A nicely calibrated rotary gear shift dial on the streamlined center console frees up space to create a roomier front-row experience. Plus, ample clearance makes it easy to enter and exit the front and rear seats.



U.S. model shown. Screen display varies by market.

YOUR TECH, YOUR WAY.

With three 12V powerpoints and 2 USB ports, Ford Escape welcomes a vast array of smartphones, tablets, gaming systems and computers along for the ride. With the Voice-Activated Touchscreen Navigation System,^{1,2} and easy-to-follow directions, Escape is perfectly equipped to take you anywhere you want to go while still on the grid.



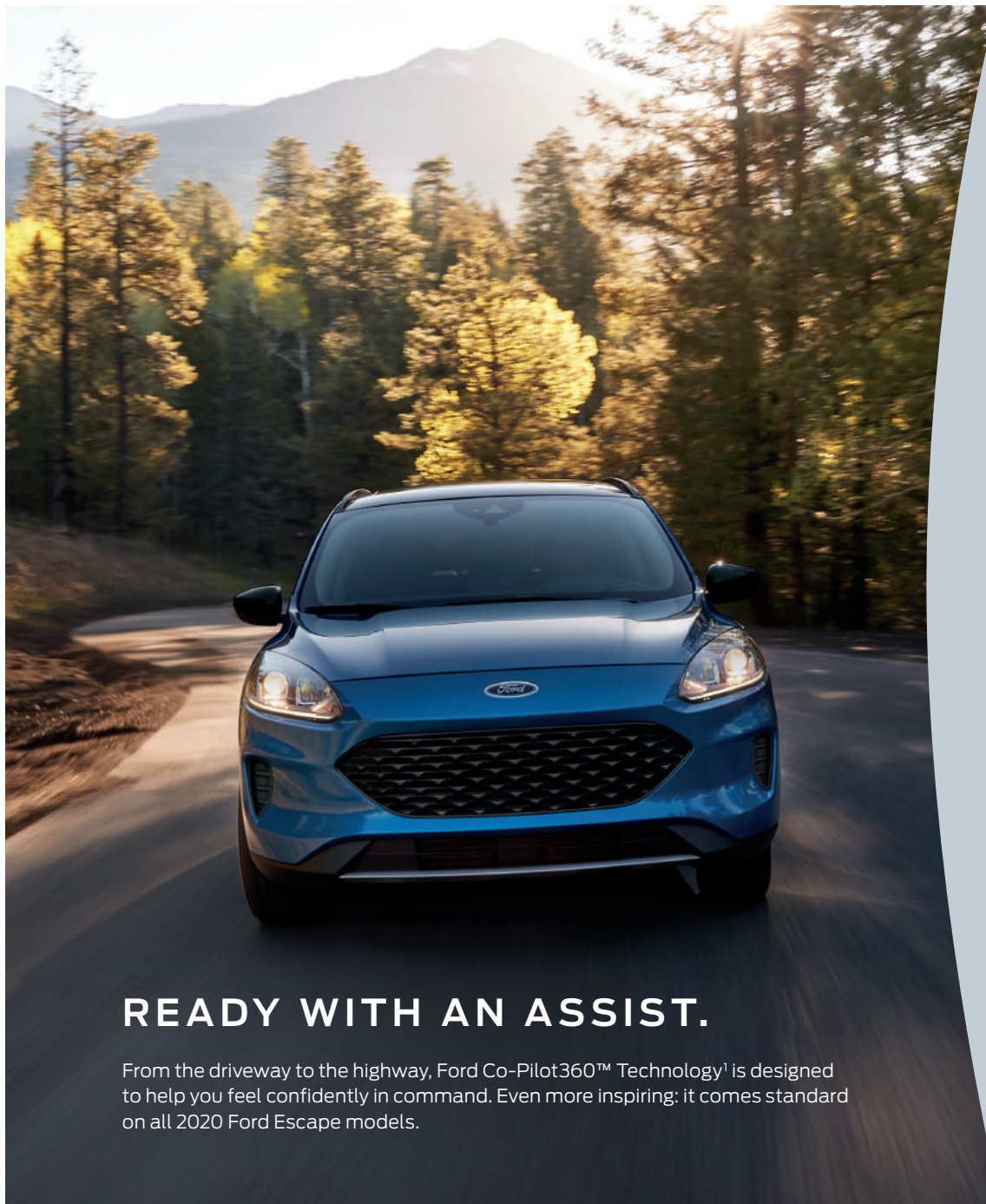
LOVES ROAD TRIPS

Voice-activated navigation^{1,2} delivers turn-by-turn directions and vivid 3-D maps on the SYNC 3 touchscreen.¹ Pinch-to-zoom capability allows for a closer look.

SE Sport. Sandstone ActiveX seating surfaces. SE Sport Premium Package. Available equipment. ¹Available feature. ²Availability varies by market.

2020 ESCAPE | S | SE | SE SPORT





READY WITH AN ASSIST.

From the driveway to the highway, Ford Co-Pilot360™ Technology¹ is designed to help you feel confidently in command. Even more inspiring: it comes standard on all 2020 Ford Escape models.

FORD CO-PILOT360 TECHNOLOGY



PRE-COLLISION ASSIST WITH AUTOMATIC EMERGENCY BRAKING²

We should all drive defensively. By scanning the road ahead, this feature can alert you to potential collisions with vehicles or pedestrians in your path. If an impact is imminent and you don't take action, brakes can apply automatically. It only activates when needed.



BLIS[®] WITH CROSS-TRAFFIC ALERT

Changing lanes demands your full attention. BLIS (Blind Spot Information System) can help by alerting you to vehicles detected in your blind spots. Cross-Traffic Alert helps by detecting and alerting you to traffic behind you as you're slowly backing up.



LANE-KEEPING SYSTEM

It happens. Listening to your favorite podcast, you wander too close to your lane's edge. Our Lane-Keeping System³ can alert you if you drift out of your lane, and can also apply steering wheel torque to help direct you to return to your lane. Stray a few times and a coffee cup icon lets you know it's time to take a break.



AUTO HIGH-BEAM HEADLAMPS

Sound familiar? You turn on high beams entering a dark stretch of road – then forget to turn them off as traffic approaches. Auto High-Beam Headlamps can detect poor lighting and switch them on for you. They can also sense oncoming headlamps and dim automatically for other drivers.



REAR VIEW CAMERA

Backing up requires a little multitasking. Our Rear View Camera helps by providing a great view of what's behind your vehicle. It also helps when you're lining up a trailer.

Standard on every 2020 Ford Escape

SE Sport. Velocity Blue. Available equipment. ¹Driver-assist features are supplemental and do not replace the driver's attention, judgment and need to control the vehicle. ²Pre-Collision Assist with AEB can detect pedestrians, but not in all conditions and does not replace safe driving. See owner's manual for system limitations. ³Lane-Keeping System does not control steering.

2020 ESCAPE | S | SE | SE SPORT



S

SELECTABLE DRIVE MODES

LED TAILLAMPS

FORD CO-PILOT360™

1.5L ECOBOOST®

WITH AUTO START-STOP TECHNOLOGY

8-SPEED AUTOMATIC TRANSMISSION STANDARD

Daily victories start here. Turn the new rotary gear shift dial to Reverse. Before you're even out of your spot, the Rear View Camera¹ and the sensors from Cross-Traffic Alert¹ can pick up a vehicle driving by in the parking garage. Bad morning, averted. On the road, a light rain makes the surface slick. Adjust the Selectable Drive Mode to Slippery to increase your control. Need to call the office before you arrive? SYNC® voice-activated technology² can place the call while your phone is still in your duffel bag. The day hasn't even begun, and you're already on top of your game. Thanks to the all-new Escape S.



COLORS: Desert Gold,³ Velocity Blue,³ Oxford White, Ingot Silver,³ Dark Persian Green,³ Magnetic,³ Agate Black,³ Sedona Orange³

Available equipment shown. ¹Driver-assist features are supplemental and do not replace the driver's attention, judgment and need to control the vehicle. ²Don't drive while distracted. Use voice-operated systems when possible; don't use handheld devices while driving. Some features may be locked out while the vehicle is in gear. Not all features are compatible with all phones. Functionality varies by market. ³Metallic. ⁴When properly equipped.

2020 ESCAPE | S | SE | SE SPORT



S

ESCAPE S STANDARD FEATURES:

MECHANICAL

Active grille shutters
Electric power-assisted steering
Front-wheel drive (FWD)
Mini spare wheel and tire
Power disc brakes with Anti-Lock Brake System (ABS)
Selectable Drive Modes
Torque Vectoring Control

FORD CO-PILOT360™ TECHNOLOGY

AdvanceTrac® with RSC® (Roll Stability Control™) and Curve Control
Auto Hold
Autolamp Automatic On/Off Headlamps
Ford Co-Pilot360: Auto High-Beam Headlamps, BLIS® (Blind Spot Information System) with Cross-Traffic Alert, Lane-Keeping System (includes Lane-Keeping Assist, Lane-Keeping Alert and Driver Alert), Pre-Collision Assist with Automatic Emergency Braking (AEB) (includes Pedestrian Detection, Forward Collision Warning, and Dynamic Brake Support), and Rear View Camera
Post-Collision Braking

APPEARANCE

Black, power sideview mirrors
Wiper-activated halogen reflector headlamps with courtesy delay

COMFORT & CONVENIENCE

6-way manual driver's seat and 4-way manual front-passenger seat
12V powerpoints (3)
60/40 split-fold rear seat with slide
Configurable daytime running lamps
Dual chrome exhaust tips
Easy Fuel® capless fuel filler
Hooks for cargo tie-down (2) and groceries (2)
Illuminated Entry System
Manual-tilt/-telescoping steering column
Particulate air filter
Power door locks with autolock and auto unlock
Power windows with driver one-touch-down feature
Steering wheel-mounted cruise and audio controls
Variable-intermittent front windshield wipers with washer; rear wiper with washer

CONNECTIVITY & ENTERTAINMENT

AM/FM stereo with 6 speakers
SYNC® Voice Recognition Communications and Entertainment System with 4.2" LCD screen in center stack, and 2 smart-charging USB ports

SAFETY & SECURITY

Personal Safety System™ for driver and front passenger includes dual-stage front airbags¹ safety belt pretensioners, safety belt energy-management retractors, safety belt usage sensors, driver's seat position sensor, crash severity sensor, restraint control module and Front-Passenger Sensing System
Driver's knee airbag¹
Front-seat side airbags¹
Safety Canopy® System with side-curtain airbags¹ and rollover sensor
Front height-adjustable shoulder safety belts
MyKey® technology
SecuriLock® Passive Anti-Theft System
SOS Post-Crash Alert System™
Tire Pressure Monitoring System (excludes spare)

OPTIONS

Intelligent AWD System
Supplemental PTC heater

AVAILABLE OPTIONS FOR ALL MODELS

Cargo mat
Cargo shade
Engine block heater
Front and rear floor liners



CLOTH SEATING SURFACES:

Dark Earth Gray



17"
STEEL WITH SPARKLE SILVER-PAINTED COVERS
Standard



17"
SHADOW SILVER-PAINTED ALUMINUM
Optional

DIMENSIONS

MAX. EXTERIOR

Wheelbase: **106.7"**
Length: **180.5"**
Height: **6.1"**
Width - Mirrors folded: **78.7"**
Width - Including mirrors: **85.6"**

MAX. INTERIOR

Front/Rear
Head room: **40"/39.3"**
Leg room (max.): **42.4"/40.7"**
Hip room: **55.2"/53.3"**
Shoulder room: **57.6"/56"**

MAX. CARGO VOLUME (cu. ft.)

Behind 1st row: **65.4**
Behind 2nd row: **37.5**

Ford Genuine Parts & Service. Keep your vehicle in optimum operating condition with scheduled maintenance service. Ford and Lincoln Dealership technicians know your vehicle inside and out. They are continuously trained by Ford Motor Company and the parts they use are specifically designed for your vehicle. □ See your dealer for limited warranty information on Ford Original Accessories. Ford Licensed Accessories (FLA) are warranted by the accessory manufacturer's warranty. FLA are designed and developed by the accessory manufacturer and have not been designed or tested to Ford Motor Company engineering requirements. Contact your Ford Dealer for details and/or a copy of all limited warranties.

Comparisons based on competitive models (Escape class is Small Utilities; Escape Hybrid class is Small Hybrid Utilities; each based on Ford segmentation), publicly available information and Ford certification data at time of printing. Vehicles may be shown with optional equipment which may or may not be available in your market. Features may be offered only in combination with other options or subject to additional ordering requirements/limitations. Dimensions shown may vary due to optional features and/or production variability. Information is provided on an "as is" basis and could include technical, typographical or other errors. Ford makes no warranties, representations, or guarantees of any kind, express or implied, including but not limited to, accuracy, currency, or completeness, the operation of the information, materials, content, availability, and products. Ford reserves the right to change product specifications, pricing and equipment at any time without incurring obligations. Your Ford or Lincoln Dealer is the best source of the most up-to-date information on Ford and Lincoln vehicles. Colors are representative only. See your dealer for actual paint/trim options.

©2019 Ford Motor Company

Available equipment shown. ¹Always wear your safety belt and secure children in the rear seat.

2020 ESCAPE | S | SE | SE SPORT



SE

CHROME GRILLE SURROUND

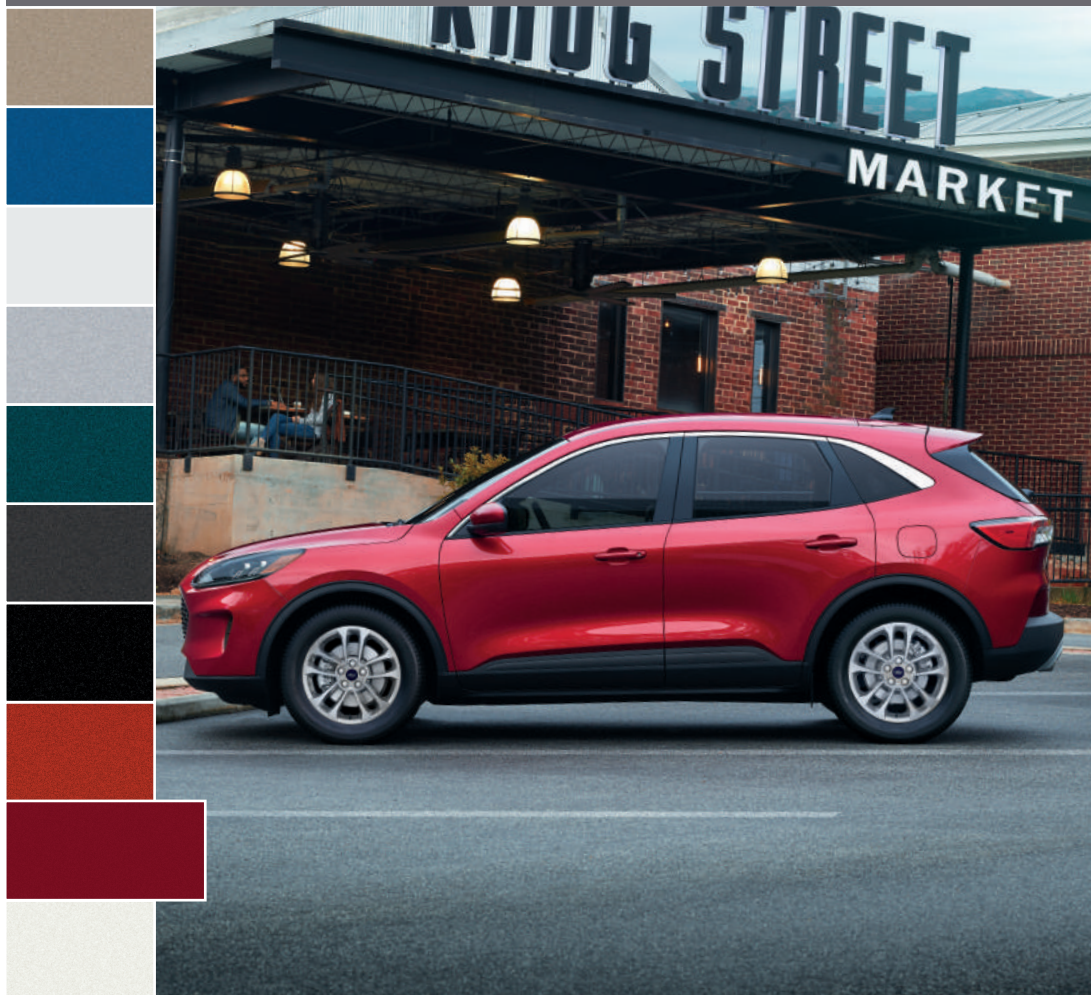
10-WAY POWER DRIVER'S SEAT

INTELLIGENT ACCESS WITH PUSH-BUTTON START

1.5L ECOBOOST®

WITH AUTO START-STOP TECHNOLOGY

8-SPEED AUTOMATIC TRANSMISSION STANDARD



COLORS: Desert Gold;² Velocity Blue;² Oxford White, Ingot Silver;² Dark Persian Green;² Magnetic;² Agate Black;² Sedona Orange;² Rapid Red Metallic Tinted Clearcoat;³ Star White Metallic Tri-coat³

The E stands for Extras. Escape SE gives you more. With all the added features you get, SE makes for a more enjoyable driving experience. Start with electronic automatic temperature control and heated front seats that add a touch of sophistication to Escape. You even get more Ford Co-Pilot360™ Technology when you add Ford Co-Pilot360 Assist.¹ These features join SE standards such as Intelligent Access with push-button start, and the SecuriCode™ invisible keypad.

INCLUDES SELECT S FEATURES, PLUS:

APPEARANCE

Body-color exterior door handles and power, heated sideview mirrors

Chrome grille surround and upper window moldings

Halogen projector-beam headlamps with LED signature lamps

Privacy glass (all rear glass)

COMFORT & CONVENIENCE

10-way power driver's seat with power lumbar and recline

Electronic automatic temperature control

Front-passenger seat back map pocket

Heated front seats

Illuminated visor mirrors

Intelligent Access with push-button start

Rear-seat center armrest

SecuriCode invisible keypad

CONNECTIVITY & ENTERTAINMENT

SYNC® 3 with 8" LCD capacitive touchscreen in center stack, and 2 smart-charging USB ports

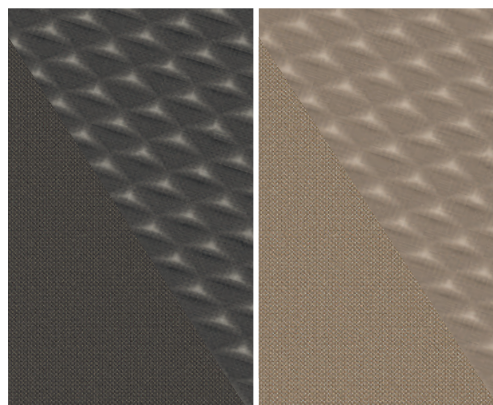
OPTIONS & PACKAGES

Ford Co-Pilot360 Assist: Adaptive Cruise Control with Stop-and-Go; Evasive Steering Assist; and Voice-Activated Touchscreen Navigation System⁴ with pinch-to-zoom capability

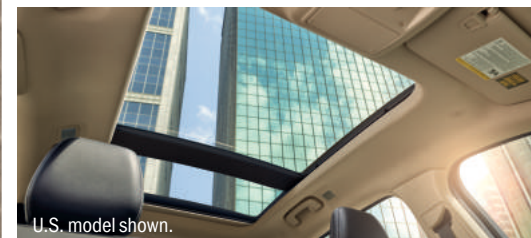
Panoramic Vista Roof® (includes black roof-rack side rails)

Supplemental PTC heater

Also see "Available Options for All Models" on the Escape S specifications page.



17"
SHADOW SILVER-PAINTED ALUMINUM
Standard



CLOTH SEATING SURFACES: Dark Earth Gray or Sandstone

Available equipment shown. ¹Driver-assist features are supplemental and do not replace the driver's attention, judgment and need to control the vehicle. ²Metallic. ³Additional charge. ⁴Availability varies by market.

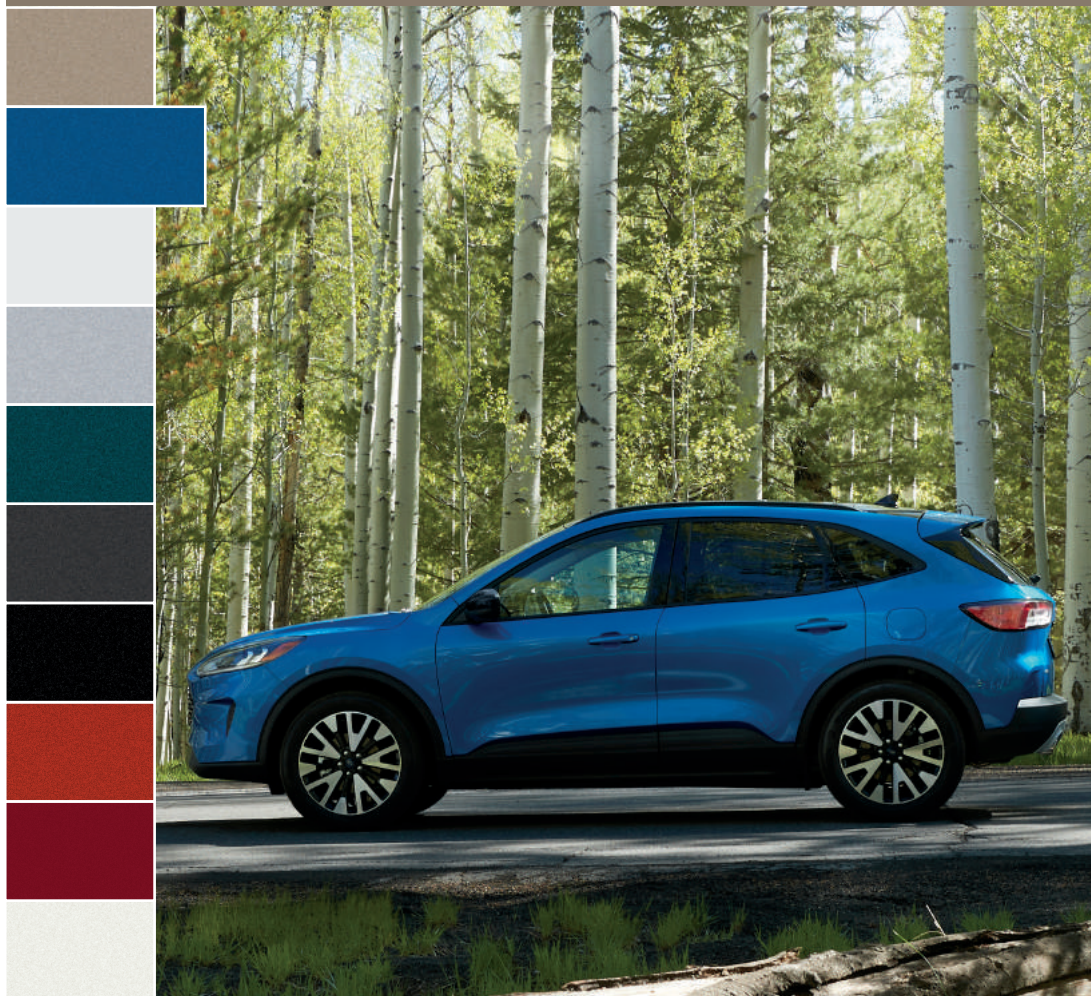
2020 ESCAPE | S | SE | SE SPORT



SE SPORT

12.3" INSTRUMENT CLUSTER
LEATHER-WRAPPED STEERING WHEEL
PEDESTRIAN ALERT SOUNDER

2.5L iVCT ATKINSON CYCLE I-4 HYBRID
ELECTRONICALLY CONTROLLED CONTINUOUSLY
VARIABLE TRANSMISSION (eCVT)



COLORS: Desert Gold,¹ Velocity Blue,¹ Oxford White, Ingot Silver,¹ Dark Persian Green,¹ Magnetic,¹ Agate Black,¹ Sedona Orange,¹ Rapid Red Metallic Tinted Clearcoat,² Star White Metallic Tri-coat²

Available equipment shown. ¹Metallic. ²Additional charge. ³Availability varies by market.

Recharge your driving spirit. Escape SE Sport stands out with black exterior accents and unique 17" wheels. Add the SE Sport Premium Package with Ford Co-Pilot360™ Assist for a panoramic Vista Roof,[®] machined-face aluminum wheels with Ebony accents, and much more. Inside, enjoy an instrument cluster with customizable displays and 3D animation for each drive mode. Fewer stops. More adventure. Hit the road – and don't look back – in SE Sport.

INCLUDES SELECT SE FEATURES, PLUS:

MECHANICAL

Electronic fuel door release
Tire inflator and sealant kit
(replaces mini spare tire and wheel)

COMFORT & CONVENIENCE

12.3" configurable LED digital instrument cluster
Leather-wrapped steering wheel

APPEARANCE

Black grille surround, sideview mirror caps
and upper window moldings

SAFETY & SECURITY

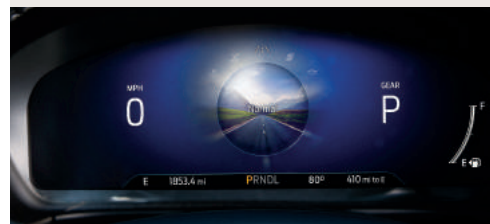
Pedestrian Alert Sounder

OPTIONS & PACKAGES

SE Sport Premium Package with Ford Co-Pilot360 Assist:
19" machined-face aluminum wheels with Ebony-painted pockets and 225/55R19 all-season BSW tires; ActiveX seating material; panoramic Vista Roof (includes black roof-rack side rails); power liftgate; Remote Start System; Adaptive Cruise Control with Stop-and-Go; Evasive Steering Assist; and Voice-Activated Touchscreen Navigation System³ with pinch-to-zoom capability

Mini spare wheel and tire

Also see "Available Options for All Models" on the Escape S specifications page.



17"
EBONY BLACK-PAINTED ALUMINUM
Standard



19"
MACHINED-FACE ALUMINUM
WITH EBONY-PAINTED POCKETS
Included with SE Sport Premium Package

CLOTH SEATING SURFACES: Sandstone or Dark Earth Gray (*Standard*)

ActiveX SEATING SURFACES: Sandstone or Ebony (*SE Sport Premium Package*)