

2020 Hyundai

# TUCSON





## You know smart design when you see it.

It looks like this: The 2020 Hyundai Tucson. A creation of Hyundai's European Design Centre, Tucson is sleek and athletic outside – and filled with smart technology features inside. Its compact exterior dimensions help you maneuver through urban congestion, and a Surround View Monitor is available to help you spot curbs, light poles and other obstacles while parking.

Tucson's elevated seating position gives you a commanding view, while a big 7" floating touchscreen display makes it easy to see and control audio and multimedia systems. An available 8" navigation touchscreen includes junction view lane guidance and a split-screen display that maximizes at-a-glance information. Then, there are the things Tucson is able to see for you. Tucson Ultimate's Forward Collision-Avoidance Assist technology monitors the road ahead for pedestrians and slowing or stopped vehicles, applying emergency braking as needed to help avoid a collision.<sup>1</sup>

When you need to access the spacious cargo area, Tucson offers an available auto-open liftgate that is both hands-free and feet-free.<sup>2</sup> Unlike some SUVs, Tucson won't make you perform the gymnastics of waving one foot under the rear bumper while juggling an armful of shopping bags. The hands-free liftgate's opening is also height-adjustable for low overhangs.

Inside the cargo area, you'll see more evidence of smart design. There's a dual-level cargo floor and a slot for securely stowing the removable cargo cover. The 60/40 split-folding rear seats give you the flexibility to reconfigure your Tucson for whatever, and whoever, you're planning to carry. Looking for an SUV designed with the perfect place for practically everything? You'll know you've found it in Tucson.



For the 10th year in a row,  
Hyundai has ranked #1 in customer loyalty.<sup>3</sup>



<sup>1</sup>Forward Collision-Avoidance Assist (FCA) with Pedestrian Detection helps detect pedestrians, but not in all conditions. FCA is designed to assist drivers to avoid, or reduce the severity of, collisions with cars that have slowed or stopped in front of them. It is a supplemental assist and does not replace the need for extreme care and attention by the driver. FCA may not stop the vehicle completely and will not avoid all collisions. See Owner's Manual for details. <sup>2</sup>The hands-free smart liftgate will open when your Proximity Key is within 3 feet of the detection area for at least 3 seconds. Radio transmitters and other vehicle smart keys may interfere with normal operation. Not available on SE, SEL and Value models. Please consult your Owner's Manual for details. <sup>3</sup>Based on 2010, 2011, 2012, 2013, 2014, 2015, 2016, 2017, 2018 and 2019 Brand Keys Customer Loyalty Engagement Index\*.



## You know precise design when you hear it.

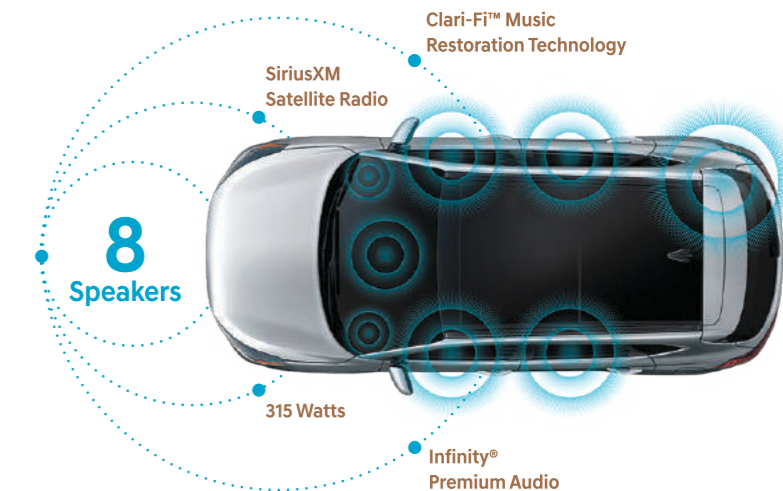
It sounds like this: The remarkably quiet Tucson interior. Pull the door shut and listen for the door closing – Hyundai engineers fine-tuned the acoustics of the latch mechanism for a solid, secure thunk. Now start the engine. The sonic response of its available 2.4L GDI engine is unmistakably powerful.

Accelerate from a stop, and Tucson's 6-speed automatic transmission moves through the gears with the smooth precision of a luxury sedan. To ensure a quiet ride, Tucson's designers infused its unibody construction with generous amounts of advanced high-strength steel for improved body stiffness, along with sound dampening materials to suppress road noise.

Call up a song from your favorite playlist. What it sounds like on Tucson's available 8-speaker Infinity® Premium Audio system may astonish you. The system uses Clari-Fi™ Music Restoration Technology, which brings your songs back to life by restoring the full sound spectrum lost in today's compressed digital music files.

Here's another cool feature: Solar-control glass. Used in Tucson's windshield and front windows, it helps keep cabin temperatures from heating up. Rear seat A/C vents – normally reserved for upscale SUVs – are also available to help ensure passenger comfort during the warm summer months. When the script is flipped, Tucson chases away the chill with available features like heated front seats, heated rear seats, heated side mirrors and a heated steering wheel.

And because precise design is uncluttered, Tucson has cut the cords with available wireless device charging, making it simple to keep your compatible smartphone powered on the road.<sup>1</sup> There's also an available rear USB power outlet, so your crew in the back seats has easy access to power, too.



"A generous equipment level for the money has long been a hallmark for Hyundai."<sup>2</sup>  
– Kelley Blue Book



Rear USB power outlet



Wireless device charging



Heated front seats



Panoramic sunroof

<sup>1</sup> Qi wireless charging function is based on smartphone compatibility and/or specific accessory cases. <sup>2</sup> From "New 2019 Hyundai Tucson SUV" on Kelley Blue Book's KBB.com. Kelley Blue Book is a registered trademark of Kelley Blue Book Co., Inc.

# You know responsive design when you hold it.

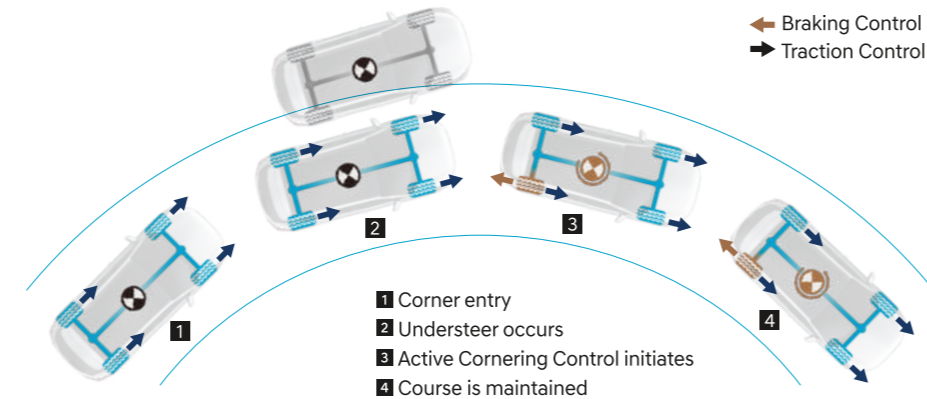
Sit in Tucson's driver seat and grab hold of the steering wheel. After all, your sense of Tucson's design and performance will ultimately be judged from the driver's perspective, right? So settle into the available 8-way power driver seat and let the soothing warmth of an available heated leather-wrapped steering wheel radiate into your hands.

Now adjust your seat's lumbar setting until your lower back has the firm support you need to feel relaxed. If you're sitting in a Tucson Ultimate, your front seat is ventilated, with cooling air passing through perforations in the leather-trimmed seat cushion at the press of a button.

One thing you won't need to hold is your breath. Tucson's available dual automatic temperature control includes a CleanAir Ionizer. It isolates and helps remove particulates of dust and pollen so the cabin air you breathe is more pure. To let in more fresh air, slide open the available panoramic sunroof – a feature typically found on more expensive SUVs.

Ease your Tucson into traffic, and see how well it holds the road. Take a corner, and Tucson's independent multi-link rear suspension balances nimble handling with a smooth ride. The remarkable traction of electronic HTRAC All Wheel Drive with Downhill Brake Control is also available to help ease you down slippery driveways.

*"If you want a vehicle with a good value proposition, the Hyundai lineup is a great place to look. A prime example is the 2019 Hyundai Tucson, which is spacious, stylish and feature-packed, even at base trim levels."<sup>1</sup> - Edmunds Expert Review*



### Active Cornering Control AWD

For optimal traction and improved agility, Tucson's Active Cornering Control All Wheel Drive adjusts the torque sent to each wheel and uses inner rear-wheel braking to help prevent understeer. Engage the driver-selectable AWD lock, and torque is split evenly between the front and rear wheels for added confidence in low-traction road conditions.



Heated steering wheel



Color LCD multi-information display



HTRAC All Wheel Drive



6-speed automatic with Drive Mode Select



<sup>1</sup>Edmunds Expert Review, 2019 Hyundai Tucson.



## You know innovative design when you feel it.

Modern safety technologies are remarkable innovations designed to alert drivers to potential hazards, which helps avoid accidents in the first place. But to get the peace-of-mind these advanced features provide, many SUVs in this class make you move up to their higher, more expensive trim levels.

Not Tucson. Every 2020 Tucson, even the base model Tucson SE, comes standard with Forward Collision-Avoidance Assist, Lane Keeping Assist<sup>1</sup> and Driver Attention Warning.<sup>2</sup> To get a full 360-degree sense of what's happening around your vehicle, you can add available safety features including Blind-Spot Collision Warning,<sup>3</sup> Rear Cross-Traffic Collision Warning,<sup>4</sup> and a Surround View Monitor.

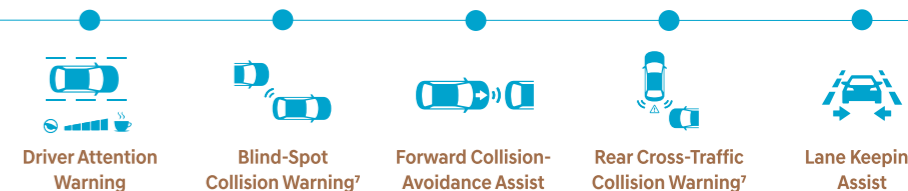
Tucson Ultimate offers our most comprehensive set of safety features. It adds Pedestrian Detection to Forward Collision-Avoidance Assist<sup>5</sup> and comes standard with High Beam Assist, rain-sensing wipers and Smart Cruise Control with Stop & Go.<sup>6</sup> Feels reassuring just reading about all those safety features, doesn't it?



Smart Cruise Control with Stop & Go  
Forward Collision-Avoidance Assist  
with Pedestrian Detection

Surround View Monitor  
Rear Cross-Traffic Collision Warning

### SmartSense Safety Features



Driver Attention  
Warning

Blind-Spot  
Collision Warning<sup>3</sup>

Forward Collision-  
Avoidance Assist

Rear Cross-Traffic  
Collision Warning<sup>4</sup>

Lane Keeping  
Assist

### Top Safety Ratings

Tucson Ultimate earned a 2019 Top Safety Pick+ rating from the Insurance Institute for Highway Safety (when equipped with available Forward Collision-Avoidance Assist and LED headlights) as well as a government 2019 5-Star Safety rating.<sup>8</sup>



<sup>1</sup>Lane Keeping Assist operates above approximately 44 MPH and only when the lane markings are clearly visible on the road. It will not work under all circumstances and will not prevent loss of control. It is a supplemental assist, and does not replace the need for extreme care and attention by the driver. See Owner's Manual for details. <sup>2</sup>It is the driver's responsibility to remain alert at all times. Driver Attention Warning is only a warning to inform the driver of a potential lack of attention or drowsiness. It does not detect and provide an alert in every situation. See Owner's Manual for details. <sup>3</sup>Do not rely completely on Blind-Spot Collision Warning (BCW) and be sure to use proper lane changing procedures. BCW may not detect every vehicle and will not prevent accidents. BCW provides an audible and visual alert if the turn signal is activated and another vehicle in the blind spot is sensed. There are limitations to the function, range, detection and clarity of these systems. See Owner's Manual for details. <sup>4</sup>Rear Cross-Traffic Collision Warning (RCCW) is active when the vehicle is in reverse gear and backing at a speed less than 6 MPH. Never rely exclusively on the RCCW. Always look over your shoulder and use your mirrors to confirm rear clearance. There are limitations to the function, detection, range and clarity of the system. See Owner's Manual to learn more. <sup>5</sup>Pedestrian Detection helps detect pedestrians, but not in all conditions. See Owner's Manual for details. <sup>6</sup>Smart Cruise Control (SCC) is not a collision avoidance or warning device. SCC is for highway use only and should not be used in poor weather, heavy or varying traffic, or on winding or slippery roads. The driver remains responsible to slow or stop the vehicle to avoid a collision. SCC initiates a full stop when the traffic ahead stops and reengages if the vehicle ahead moves forward within 3 seconds. See Owner's Manual for details. <sup>7</sup>Not available on Tucson SE. <sup>8</sup>To qualify for 2019 TOP SAFETY PICK+, a vehicle must earn Good ratings in the driver-side small overlap front, passenger-side small overlap front, moderate overlap front, side, roof strength and head restraint tests. It also must earn an Advanced or Superior rating for front crash prevention and a Good headlight rating. For details visit [www.iihs.org](http://www.iihs.org). Government 5-Star Safety ratings are part of the National Highway Traffic Safety Administration's (NHTSA) New Car Assessment Program. For details visit [www.nhtsa.gov](http://www.nhtsa.gov).



# You know seamless design when you connect to it.

We know how connected you are to your smartphone. So we made sure that connection extends to Tucson's award-winning Blue Link® Connected Car features.<sup>1</sup> Using the free MyHyundai app, your smartphone becomes a remote control capable of locking/unlocking your Tucson and starting its engine before you walk out the door.<sup>2</sup> With your Amazon Echo® or Google Home™ device, you can also set the cabin temperature in your Tucson using voice commands from the comfort of your couch or kitchen.<sup>3</sup>

Blue Link Guidance lets you search, download and navigate to addresses and points of interest using voice commands from the driver seat or your smartphone before entering your Tucson Ultimate.<sup>4</sup>

More good news – on every Tucson model, Apple CarPlay® and Android Auto™ come standard.<sup>5</sup> You can use Tucson's large touchscreen display or voice commands to access maps and navigation, your phone's contact lists, texts, calls, music library and more.

Then there's Blue Link Connected Care. Complimentary for your first three years, it offers exceptional peace of mind. Wherever you may roam, trained operators are standing by to provide emergency roadside assistance in the event of an accident where airbags are deployed.<sup>6</sup> Your Blue Link app can even help law enforcement recover your vehicle if it's ever stolen. Visit [hyundaibluelink.com](http://hyundaibluelink.com) for more information on the complete list of innovative features Blue Link puts at your fingertips.



### Automatic Emergency Assistance

Blue Link Connected Care offers 24/7 SOS Emergency Assistance and Automatic Collision Notification that calls for help if you're in an accident where airbags deploy.



### On-Demand Diagnostics

Run vehicle diagnostics from your Hyundai's touchscreen, report issues at the press of a button and receive Monthly Vehicle Health Reports or maintenance reminders by email.



### Destination Send-to-Car

Use your smartphone to find restaurants or points of interest that may not be updated on your vehicle's maps, then send the destination to Tucson's navigation system.



### Service Link

Conveniently schedule your vehicle for service from the driver seat of your Tucson or using your MyHyundai smartphone app.



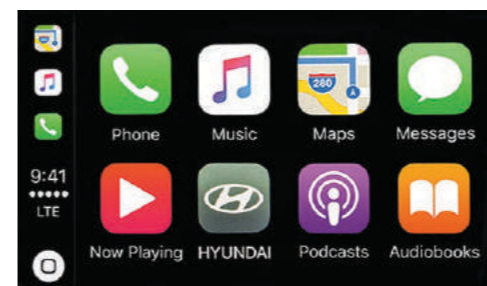
### Car Finder

Our Car Finder smartphone app feature lets you navigate your way through crowded parking lots back to your Tucson.<sup>7</sup>

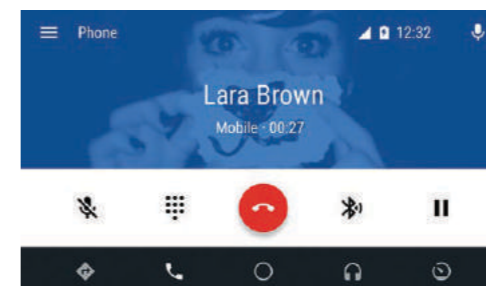


### Remote Controls

Use your smartphone, home assistant or wearable device to remotely start your Tucson's engine, unlock the doors, set the cabin temperature and more.



Apple CarPlay®



Android Auto™

<sup>1</sup> Not available with Tucson SE. Blue Link is complimentary for the first 3 years of ownership and requires an active Blue Link subscription. Three-year term starts from the new vehicle date of first use and is available for new vehicle purchases and leases based upon terms and conditions on the Blue Link subscription enrollment pages. Only use Blue Link and corresponding devices when it is safe to do so. Cellular and GPS coverage is required. Features, specifications, and fees vary by subscription plan and are subject to change. For details, visit [hyundai.com](http://hyundai.com) or your authorized Hyundai dealer. <sup>2</sup> Requires Blue Link Remote package. <sup>3</sup> Requires Blue Link Remote package. Amazon, Alexa and all related logos and motion marks are trademarks of Amazon.com, Inc. or its affiliates. Google Home and related marks are trademarks of Google Inc. <sup>4</sup> Requires navigation-equipped vehicle and Blue Link Guidance package. <sup>5</sup> Apple CarPlay works with iPhone 5s, iPhone 5c, iPhone 5 and later models running the latest version of iOS 7 and above. Apple is a registered trademark of Apple Inc. Android Auto works with smartphones running on Android 5.0 Lollipop and higher. Android, Android Auto, Google Play and other marks are trademarks of Google Inc. <sup>6</sup> Blue Link agents will contact existing emergency service responders. <sup>7</sup> Smartphone GPS location must be within 1-mile radius of vehicle's location to display searched location.

## TUCSON SE

2.0L GDI 4-Cylinder

**hp** 161  
**lb-ft** 150



### Popular Features

- 7" color touchscreen display AM/FM/MP3 audio
- Apple CarPlay® and Android Auto™
- Forward Collision-Avoidance Assist
- Lane Keeping Assist
- Driver Attention Warning
- YES Essentials® stain-resistant cloth seats (Gray/Beige)

**EPA MPG Estimates** City/Highway/Combined¹

**23/28/25** FWD 6-speed A/T

**22/25/23** AWD 6-speed A/T

## TUCSON Value

2.0L GDI 4-Cylinder

**hp** 161  
**lb-ft** 150



### Popular Features

- Proximity Key entry with push button start
- 8-way power driver seat with 2-way power lumbar
- Heated front seats
- Blind-Spot Collision Warning
- Rear Cross-Traffic Collision Warning
- Blue Link® Connected Car System

**EPA MPG Estimates** City/Highway/Combined¹

**23/28/25** FWD 6-speed A/T

**22/25/23** AWD 6-speed A/T

## Wheels

SE / Value  
17" Alloy Wheel



SEL / Limited / Ultimate  
18" Alloy Wheel



Sport  
19" Alloy Wheel



## TUCSON SEL

2.4L GDI 4-Cylinder

**hp** 181  
**lb-ft** 175



### Popular Features

- Electronic Parking Brake with Automatic Vehicle Hold
- Chrome-tipped dual-outlet exhaust
- 18" alloy wheels
- Rear USB power outlet
- Dual automatic temperature control w/ CleanAir Ionizer
- Floor console-mounted rear vents

**EPA MPG Estimates** City/Highway/Combined¹

**22/28/25** FWD 6-speed A/T

**21/26/23** AWD 6-speed A/T

## TUCSON Sport

2.4L GDI 4-Cylinder

**hp** 181  
**lb-ft** 175



### Popular Features

- LED headlights and taillights
- LED Daytime Running Lights
- Hands-free smart liftgate with auto open
- Leather-wrapped steering wheel and shift knob
- Infinity® Premium Audio with 8 speakers
- Wireless device charging

**EPA MPG Estimates** City/Highway/Combined¹

**22/28/25** FWD 6-speed A/T

**21/26/23** AWD 6-speed A/T

## TUCSON Limited

2.4L GDI 4-Cylinder

**hp** 181  
**lb-ft** 175



### Popular Features

- Chrome-accent front grille and door handles
- Surround View Monitor
- Leather seating surfaces
- Heated steering wheel
- Side mirrors with turn signal indicators
- 8-way power front passenger seat

**EPA MPG Estimates** City/Highway/Combined¹

**22/28/25** FWD 6-speed A/T

**21/26/23** AWD 6-speed A/T

## TUCSON Ultimate

2.4L GDI 4-Cylinder

**hp** 181  
**lb-ft** 175



### Popular Features

- Forward Collision-Avoidance Assist with Pedestrian Detection
- 8" high-resolution touchscreen navigation system
- Smart Cruise Control with Stop & Go
- Ventilated front seats and heated rear seats
- Power tilt-and-slide panoramic sunroof

**EPA MPG Estimates** City/Highway/Combined¹

**22/28/25** FWD 6-speed A/T

**21/26/23** AWD 6-speed A/T

¹EPA estimates for comparison only. Your actual mileage will vary with options, driving conditions, driving habits and the vehicle's condition.

## Interior Colors

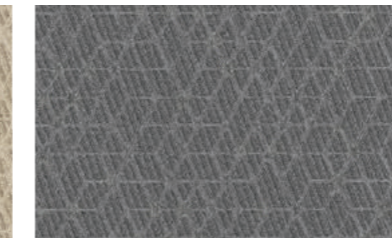
SE / Value / SEL / Sport

Beige Cloth



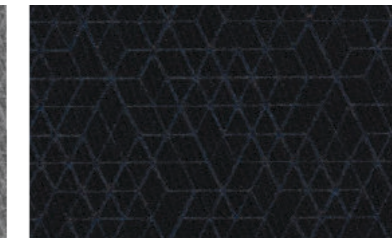
SE / Value / SEL / Sport

Gray Cloth



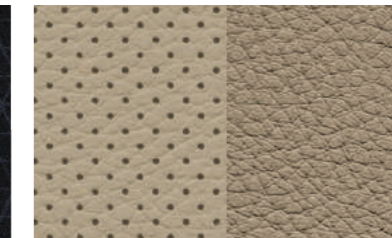
SE / Value / SEL / Sport

Black Cloth



Limited / Ultimate

Beige Leather



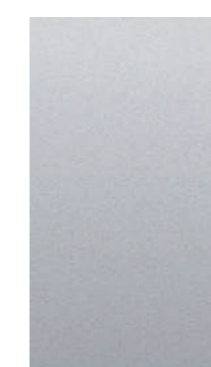
Limited / Ultimate

Black Leather

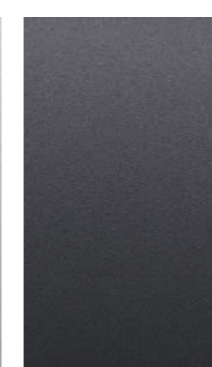


## Exterior Colors

Stellar Silver



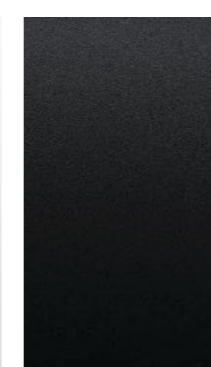
Magnetic Force



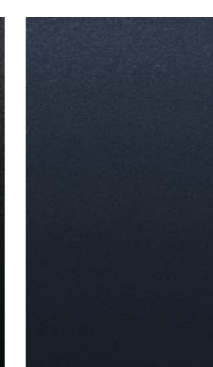
Winter White



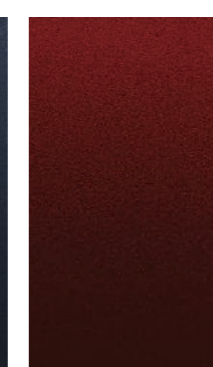
Black Noir Pearl



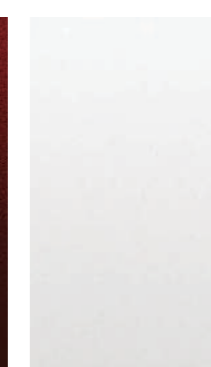
Dusk Blue



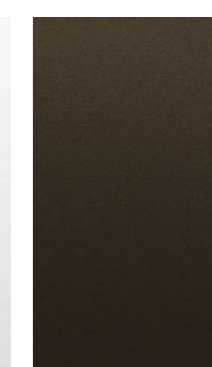
Gemstone Red



Cream White



Sage Brown



Aqua Blue



TUCSON	SE	Value	SEL	Sport	Limited	Ultimate
<b>Power &amp; Handling</b>						
161 hp/150 lb-ft, 2.0L GDI 4-cylinder engine	●	●	—	—	—	—
181 hp/175 lb-ft, 2.4L GDI 4-cylinder engine	—	—	●	●	●	●
6-speed automatic transmission with SHIFTRONIC®	●	●	●	●	●	●
Drive Mode Select	●	●	●	●	●	●
HTRAC All Wheel Drive and Downhill Brake Control	○	○	○	○	○	○
<b>Exterior Features</b>						
Chrome accent grille	—	—	—	—	●	●
Projector headlights	●	●	●	—	—	—
Automatic headlights	●	●	●	●	●	●
LED Daytime Running Lights	—	—	—	●	●	●
LED headlights and taillights	—	—	—	●	●	●
Front foglights	—	—	—	●	●	●
Side mirrors with LED turn signal indicators	—	—	—	—	●	●
LED accent lights	—	●	●	●	●	●
Heated side mirrors	—	●	●	●	●	●
Chrome exterior door handles	—	—	—	—	●	●
Roof side rails	—	●	●	●	●	●
Chrome-tipped dual-outlet exhaust	—	—	●	●	●	●
Bodycolor rear spoiler with LED center brake light	●	●	●	●	●	●
Acoustic-laminated noise-reducing windshield	●	●	●	●	●	●
Solar-control front glass and privacy rear glass	●	●	●	●	●	●
Rain-sensing windshield wipers	—	—	—	—	—	●
Hands-free smart liftgate with auto open	—	—	—	●	●	●
Power tilt-and-slide panoramic sunroof	—	—	—	—	—	●
Rear View Monitor with Parking Guidance	●	●	●	●	●	●
<b>Interior Features</b>						
Proximity Key entry with push button start	—	●	●	●	●	●
Electroluminescent Gauge Cluster with color LCD multi-information display	—	—	—	—	—	●
Tilt-and-telescopic steering wheel with audio, phone and cruise controls	●	●	●	●	●	●
Electronic Parking Brake with Automatic Vehicle Hold	●	●	●	●	●	●
Leather-wrapped steering wheel and shift knob	—	—	—	●	●	●
Power windows with driver's auto-down	●	—	—	—	—	—
Power windows with driver's auto-down/up	—	●	●	●	●	●
Dual automatic temperature control with CleanAir Ionizer and auto defogger	—	—	●	●	●	●
8-way power driver seat with 2-way power lumbar support	—	●	●	●	●	●
8-way power front passenger seat	—	—	—	—	●	●
YES Essentials® stain-resistant cloth seats (Gray & Beige)	●	●	●	●	—	—
Leather seating surfaces	—	—	—	—	●	●
Heated steering wheel	—	—	—	—	●	●
Heated front seats with 3 settings	—	●	●	●	●	●
Ventilated front seats and heated rear seats	—	—	—	—	—	●

TUCSON	SE	Value	SEL	Sport	Limited	Ultimate
<b>Interior Features</b>						
Auto-dimming rearview mirror with HomeLink®	—	—	—	●	●	●
Floor console-mounted rear vents	—	—	●	●	●	●
Reclining 60/40 split-folding rear seats with center armrest	●	●	●	●	●	●
Adjustable head restraints for all positions	●	●	●	●	●	●
Sunvisors with illuminated vanity mirrors	—	●	●	●	●	●
Windshield wiper de-icer	○	○	○	○	○	○
<b>SmartSense Advanced Safety</b>						
Forward Collision-Avoidance Assist	●	●	●	●	●	—
Forward Collision-Avoidance Assist with Pedestrian Detection	—	—	—	—	—	●
Lane Keeping Assist	●	●	●	●	●	●
Driver Attention Warning	●	●	●	●	●	●
Blind-Spot Collision Warning	—	●	●	●	●	●
Rear Cross-Traffic Collision Warning	—	●	●	●	●	●
High Beam Assist	—	—	—	—	—	●
Surround View Monitor	—	—	—	—	●	●
Smart Cruise Control with Stop & Go	—	—	—	—	—	●
<b>Audio &amp; Connected Car Technology</b>						
Apple CarPlay® and Android Auto™	●	●	●	●	●	●
7" color touchscreen AM/FM/MP3 audio display with USB/AUX input jack	●	●	●	●	●	—
8" high-resolution touchscreen navigation system	—	—	—	—	—	●
Infinity® 315-Watt Premium Audio system with 8 speakers and Clari-Fi™ Music Restoration Technology	—	—	—	●	●	●
SiriusXM Satellite Radio and HD Radio™	—	●	●	●	●	●
Bluetooth® hands-free phone system	●	●	●	●	●	●
Wireless device charging	—	—	—	●	●	●
Blue Link® Connected Car System (3 years complimentary)	—	●	●	●	●	●
Rear USB power outlet	—	—	●	●	●	●
Three 12-volt power outlets (2 front/1 cargo area)	●	●	●	●	●	●

● Standard ○ Optional — Not Available

#### Exterior / Interior Dimensions

	TUCSON
Wheelbase	105.1 in
Overall Length	176.4 in
Overall Width	72.8 in
Overall Height (with roof side rails)	64.8 (65.0) in
Headroom – front / rear (with sunroof)	39.6 (37.9) / 39.2 (38.1) in
Legroom – front / rear	41.5 / 38.2 in
Shoulder Room – front / rear	57.1 / 55.5 in
Total Interior Volume	133.2 cu ft
Passenger Volume	102.2 cu ft
Cargo Capacity - rear seats up / folded down	31.0 / 61.9 cu ft



### America's Best Warranty

POWERTRAIN LIMITED WARRANTY

10 YEARS  
100,000 MILES

NEW VEHICLE LIMITED WARRANTY

5 YEARS  
60,000 MILES

ANTI-PERFORATION WARRANTY

7 YEARS  
UNLIMITED MILES

24/7 ROADSIDE ASSISTANCE

5 YEARS  
UNLIMITED MILES

See your authorized Hyundai dealer for LIMITED WARRANTY details.





Hyundai Hope On Wheels®

Helping Kids Fight Cancer Since 1998



## Hope makes every Hyundai better.

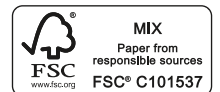
Each time we sell a Hyundai, a portion goes to Hyundai Hope On Wheels® to help find a cure for childhood cancer. Over the last 21 years, Hyundai Hope On Wheels has donated more than \$160 million. Hope is our greatest feature. And it comes standard on every Hyundai. For more information, please visit [HyundaiHopeOnWheels.org](http://HyundaiHopeOnWheels.org).



 **HYUNDAI**  
**Assurance**  
[HYUNDAIASSURANCE.COM](http://HYUNDAIASSURANCE.COM)

Our commitment to Hyundai owners doesn't end with the transfer of keys. Wherever the road takes you, we've got your back with Hyundai Assurance, an umbrella of services and benefits that includes America's Best Warranty, 24/7 Roadside Assistance, innovative safety and car care features...and more.

Fuel economy estimated by EPA for comparison only. Mileage may vary. While the information contained in this brochure was correct at the time of printing, specifications and equipment can change. Feature comparisons based on competitor information available at the time of printing. No warranty or guarantee is being extended in this brochure, and Hyundai reserves the right to change product specifications and equipment at any time without incurring obligations. Some vehicles are shown with optional equipment. Specifications apply to U.S. vehicles only. Please contact your Hyundai dealer for current vehicle specifications. As part of Hyundai's commitment to a responsible environment, this brochure was printed using paper certified by the Forest Stewardship Council®. FSC® certification helps ensure that the highest social and environmental standards are met in the making of the paper we use, contributing to conservation, responsible management and community-level benefits for people near the forests.



©2019 HYUNDAI NP020T2020